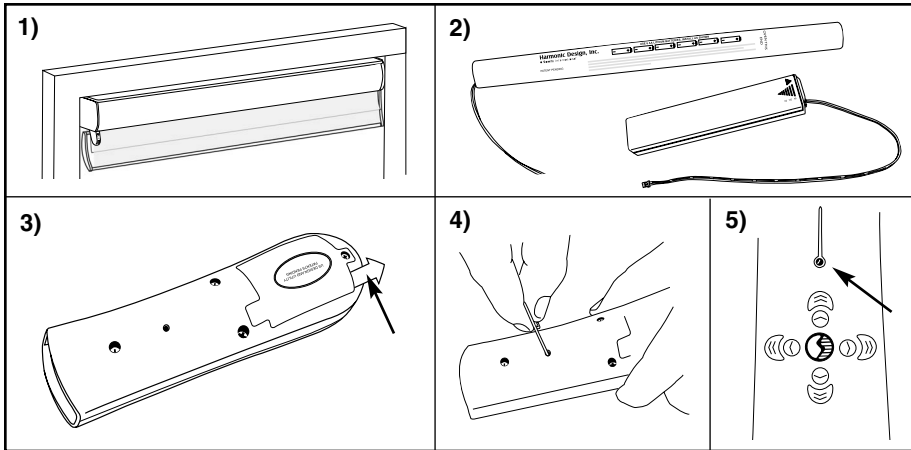
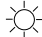
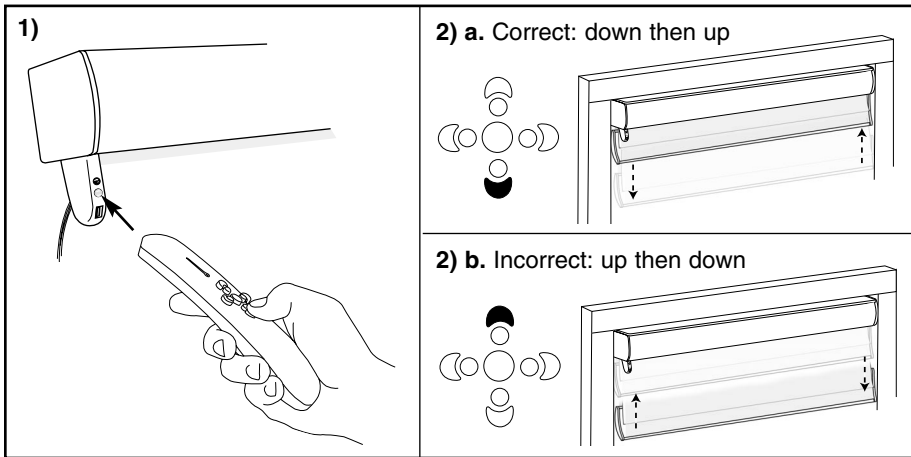


# Consumer Operation Instructions System II

## Designer Shading

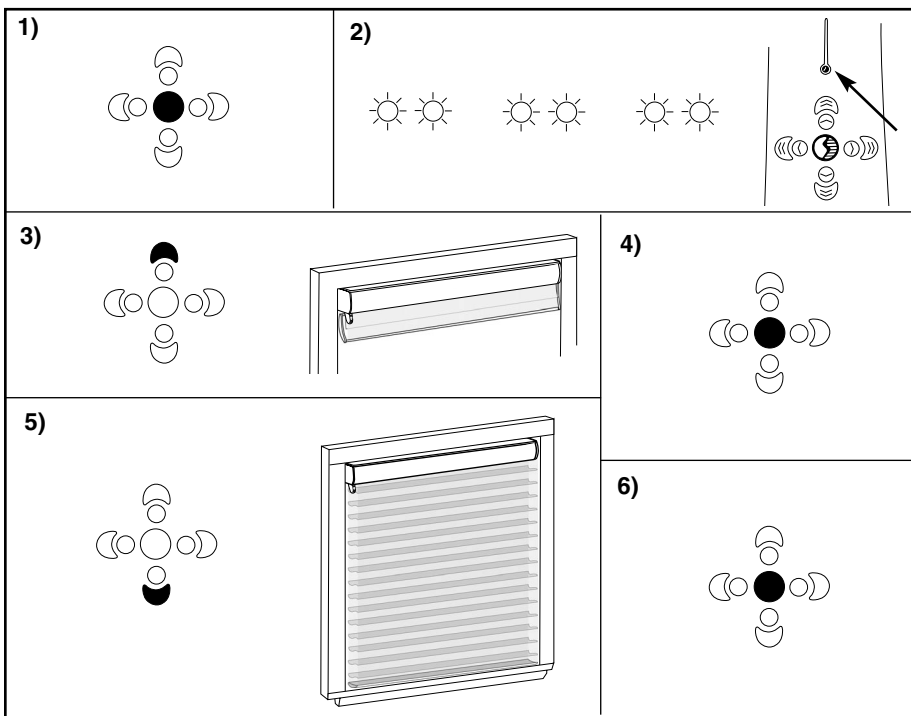


- 1) Install window shading into window frame following manufacturers instructions.
- 2) Install battery pack or optional battery wand as directed.
- 3) Remove "pull tab" from back of remote control.
- 4) Using a **small** paperclip depress the "**MODE BUTTON**" located on the back of the remote control.
- 5) Locate "**MODE LIGHT**" on top of remote control – light should be flashing in a single flash pattern. 



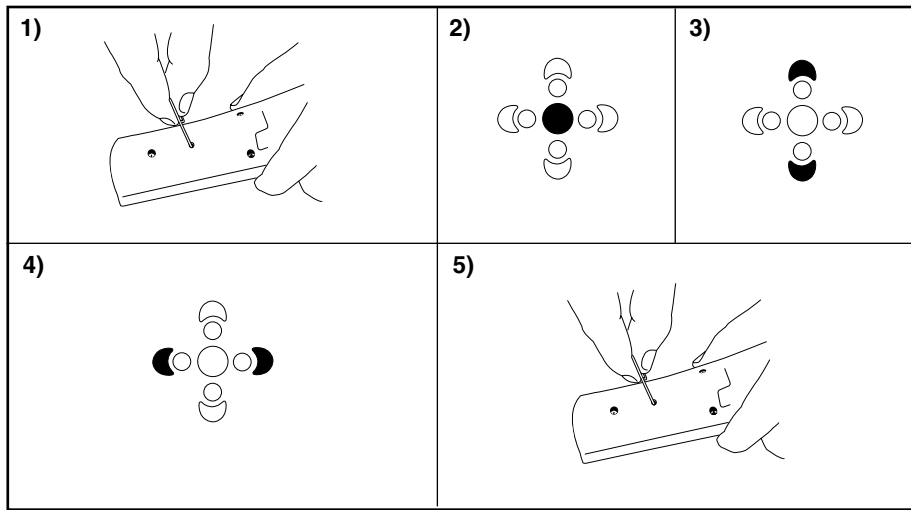
### Check / Set Polarity

- 1) Aim remote control towards the green light located on the teardrop of the motor, located just below the headrail.  
*NOTE: green light may be off*
- 2) Press the "**DOWN**" button on the remote control.
  - a. Shade will "**jog**" **down then up** – polarity is set correctly.
  - b. If shade "**jogs**" **up then down** – press and hold "**UP**" button for one second. Polarity will reverse and shade will "**jog**" down then up.



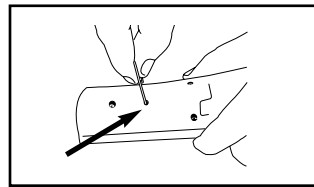
### Set Limits

- 1) To set remote control into program mode, press "**CENTER**" button on remote control for one second.
- 2) Locate "**MODE LIGHT**" on top of the remote control – light should be flashing in a double flash pattern.
- 3) Press and hold the "**TOP**" button until shade reaches top most position.
- 4) Press "**CENTER**" button for one second to lock position. Shade will give a slight "**jog**" confirming limit is set.
- 5) Press and hold the "**DOWN**" button until shade reaches bottom most position.
- 6) Press "**CENTER**" button for one second to lock position. Shade will give a slight "**jog**" confirming limit is set.
- 7) Using the small paperclip depress the "**MODE BUTTON**" located on the back of the remote control.



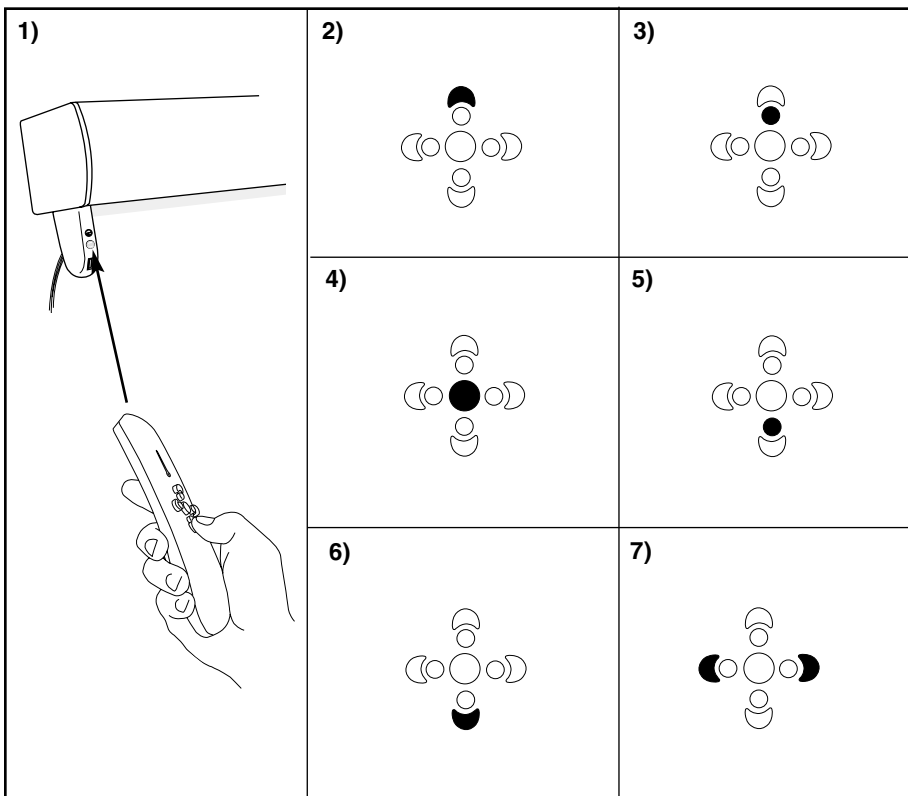
## Setting Preferred Position

- 1) Using a small paperclip, depress the "MODE BUTTON" located on the back of the remote control.
- 2) Press the "CENTER" button until the remote flashes or blinks twice.
- 3) Using either the "UP" or "DOWN" button, set your shade to the desired position.
- 4) Aim remote control at the green light on motor. Press both "LEFT" and "RIGHT" buttons at the same time. Shade will give a slight "jog" confirming it has accepted the position.
- 5) Use the small paperclip and depress the "MODE BUTTON" once again. Your favorite position is now set.



## Exit Installation

- 1) Using the small paperclip depress the "MODE BUTTON" located on the back of the remote control.



## Operation of Remote Control

- 1) Point remote control at green light located on the tear drop of the motor.
- 2) To raise the shade, press the "TOP" button and release.
- 3) To raise the shade or lower the shade to the quarter closed position, press the second button from the top or the "1/4 POINT" button and release.
- 4) To raise or lower the shade to the half closed position, press the "CENTER" button and release.
- 5) To raise or lower the shade to the three-quarter closed position, press the fourth button from the top or the "3/4 POINT" button and release.
- 6) To lower the shade completely, press the "BOTTOM" button and release.
- 7) To set shade at your favorite position, follow the programming steps for *Setting Preferred Position*. To operate, press the "LEFT" and "RIGHT" buttons at the same time and shade will move into your new "PREFERRED POSITION."

